

USER GUIDE



TOUPRET®
FILLERS FOR PROFESSIONALS

SUMMARY

Your skills, our products.....	4
A responsible approach	5
International presence	6
How to assess your project.....	8
Check the substrate condition	10
Choosing the right filler.....	12
Find the best product for your job.....	14
Choose a quality level.....	16

INTERIOR SURFACES.....	18
■ Quick Dry Filler.....	20
■ Interior Filler.....	21
■ Quick Fill	22
■ Ready To Use Filler.....	23
■ Fine Surface Filler.....	24
■ Renovation Skimcoat	25
■ Plaster Of Paris	26

PLASTERBOARD FINISHING.....	28
■ Joint Filler 1 Hour	32
■ Joint Filler 3 Hour	33
■ Finish Filler	34
■ Joint Tape	35
■ Metal Corner Tape	36
■ Adhesive Scrim	37
■ Joint & Skim Ready To Use.....	39
■ Joint, Skim & Fill Quick Dry	40
■ Joint, Skim & Fill.....	41
■ Patch & Repair Filler Quick Dry.....	42
■ Patch & Repair Filler Ready To Use.....	43

EXTERIOR SURFACES	44
■ Masonry Repair Filler.....	46
■ Tough Multi-Filler.....	47
■ Rock Solid Repair Filler.....	48
■ Quick Fill	49
■ Skimcoat Filler	50
■ Ready To Use Skimcoat Filler.....	51

PROBLEM SURFACES: CRACKS AND DAMP.....	52
■ Fill-Flex	54
■ Skim-Flex.....	55
■ Anti-Damp Render.....	56
■ Anti-Damp Treatment	57
■ Wall Hardener	58
■ Scrim	59

WOOD SURFACES.....	60
■ Wood Repair Filler (Natural Wood).....	62
■ Wood Repair Filler (White)	63
■ Wood Filler (Natural Wood)	64
■ Wood Filler (Off-White).....	65
■ Fine Finish Wood Filler	66
■ Wood Hardener.....	68
■ Glazing Putty	69

SPRAY PLASTERING.....	70
Airless spray plastering benefits.....	72
Airless spray plastering how to apply.....	74
Choosing the right nozzle.....	75
■ Airless Plaster	76
■ Airless All-In-One Plaster	77
■ Airless Jointing Plaster.....	78

Guiding trade professionals every day!	80
Our website	81



For more than 80 years we have been working for professionals to develop the best fillers for surface preparation.

We are committed to providing the products you need, helping your projects to succeed and improving the spaces your customers live and work in as sustainably as possible.

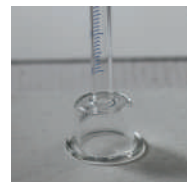
We aim to deliver the most expert and innovative solutions that help make your job easier.

We're dedicated to providing you with a comprehensive product and service offering, supporting you in all of your projects: treating, renovating and decorating your walls.

Thanks to our quality and expertise, Toupret is recognised as the go-to professional filler brand for achieving an excellent result.



A RESPONSIBLE APPROACH



Toupret was a partner in the development of the French NF Environment standard, in coordination with AFNOR, the French national organisation for standardisation. Thanks to the composition of our products, our new ranges combine efficiency and eco-friendliness and ensure the environmental impact of our production is limited.



ENDUITS DE PEINTURE - NF 446
www.afnorcert.fr



A+ PRODUCTS

Building materials and interior decoration products made in France bear a label that clearly indicates their emission level of volatile pollutants into indoor air that pose a risk of toxicity when inhaled. The qualification rating ranges from A+ (the product's emission is very low or non-existent) to C (the product presents a high emission level). We are very proud that the majority of our products are designated A+.

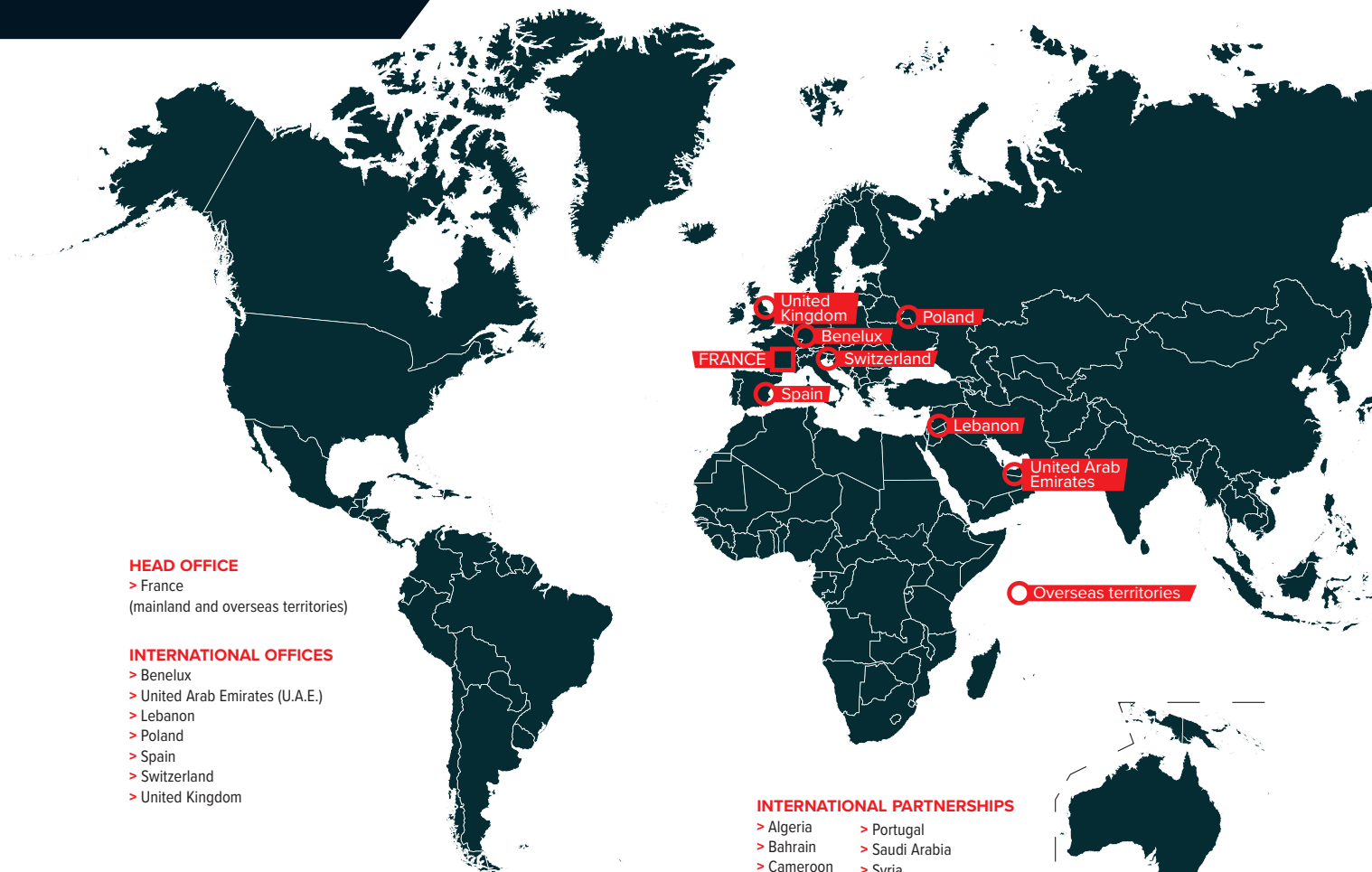


FOR THE ENVIRONMENT

Committed to a responsible product design approach, Toupret is always taking steps to preserve the environment (CO2 reduction, waste management, water treatment, etc.) and to champion the health of professionals and homeowners. Toupret is also a member of the ACDV, whose mission is to support and accelerate the development of sustainable chemistry based on the use of plant resources.



INTERNATIONAL PRESENCE



HEAD OFFICE

- > France
(mainland and overseas territories)

INTERNATIONAL OFFICES

- > Benelux
- > United Arab Emirates (U.A.E.)
- > Lebanon
- > Poland
- > Spain
- > Switzerland
- > United Kingdom

INTERNATIONAL PARTNERSHIPS

- | | |
|------------|----------------|
| > Algeria | > Portugal |
| > Bahrain | > Saudi Arabia |
| > Cameroon | > Syria |
| > Congo | > Tunisia |
| > Gabon | > South Africa |
| > Germany | > Italy |
| > Ireland | > Ivory Coast |
| > Kuwait | > Senegal |
| > Morocco | |





HOW TO ASSESS YOUR PROJECT

1 SITE EVALUATION

Is the jobsite inside or outside? Toupret offers tailored products for different locations, to ensure the best finish and performance. What type of surface are you working on? Fillers are designed to perform best on different types of substrate.

2 SUBSTRATE CONDITION

Diagnosis of the surface before starting the job is really important. The substrate should be hard, cohesive, clean, sound and dry to make sure the finished result will have a great FINISH and be LONG LASTING. If the substrate isn't stable, then you'll need to correct this before moving on.

3 FILLING TASK

Does the job entail filling, repairing, formwork, skimming or several of these? For each of these tasks, there's a filler to do the job.

4 INTENDED FINISH

Will you be painting, wallpapering or applying another decorative finish? The quality of filler finish can enhance the appearance of the final covering.

FIRST APPLY A
DAMP TREATMENT
IF ANY HUMIDITY
IS IDENTIFIED IN
THE SUBSTRATE



MAKE SURE
THAT THE
WALL DOES
NOT HAVE
MOULD OR
SPORES





CHECK THE SUBSTRATE CONDITION

THE SUBSTRATE MUST BE:

HARD

To avoid the risk of the filler detaching from the substrate.



RAW HARD SUBSTRATE



RAW SOFT SUBSTRATE

■ Use a screwdriver to scratch harder substrates like cement or masonry or use your fingernails on softer substrates like plaster. If you easily penetrate the substrate it is considered soft.

SOLUTION: Use TOUPRET WALL HARDENER (p.52).



NON POWDERY SUBSTRATE



POWDERY SUBSTRATE

■ Smooth over the substrate with your hand.

If any residue comes off, the substrate is either crumbly or powdery.

SOLUTION: Use TOUPRET WALL HARDENER (p.52).

COHESIVE

To avoid the risk of the substrate breaking off from excess loads and tensions caused by the filler.

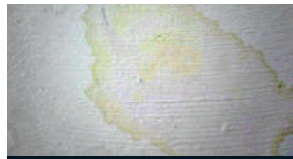


NON-COHESIVE SUBSTRATE

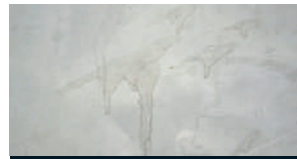
■ Scrape away any loose pieces of the wall before applying the appropriate filler to the substrate.

CLEAN

To avoid the risk of blistering and separation.



RAW DIRTY SUBSTRATE



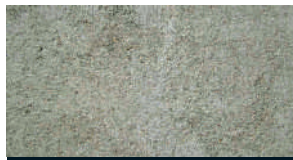
PAINTED DIRTY SUBSTRATE

■ If the substrate has stains or deposits.

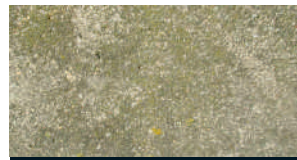
SOLUTION: Wash with a suitable product and rinse well.

SOUND

To avoid the deterioration of decorative finishes over time, due to the migration of mould, spores, efflorescence, saltpetre and rust through the substrate.



SOUND SUBSTRATE



UN SOUND SUBSTRATE

■ If the substrate is mouldy or has spores.

SOLUTION: Treat with a suitable product (anti-rust, fungicide, etc.).

DRY

To avoid the risk of blistering and separation.



RAW, DAMP SUBSTRATE



PAINTED, DAMP SUBSTRATE

■ If the substrate is damp.

SOLUTION: Use ANTI-DAMP TREATMENT (p.51) for any wet (but not dripping) substrate or ANTI-DAMP RENDER (p.50) on a raw substrate.



CHOOSING THE RIGHT FILLER

THE DIFFERENCES BETWEEN POWDER AND READY MIXED



POWDER

PREPARATION

- Mix with water as per the rates indicated on the product packaging or according to the required consistency

TIME BEFORE PAINTING

- 12 to 24 hours for a traditional filler
- 3 hours for a quick drying filler

APPLICATION THICKNESS

- Filling: no thickness limit
- Skimming/levelling: up to 5mm
- Fine smoothing: 1mm (locally 2mm)

SHRINKAGE

- Filling: none
- Skimming/levelling: none
- Fine smoothing: none

SANDING/SHAPING

- Can be shaped as soon as filler is hard
- Easy to sand as soon as the filler is dry

READY MIX

PREPARATION

- Ready to use

TIME BEFORE PAINTING

- 24 to 48 hours for a traditional filler
- 30 mins for a lightweight, quick drying filler

APPLICATION THICKNESS

- Filling: up to 10mm
- Skimming/levelling: up to 5mm
- Fine smoothing: 1mm (locally 2mm)

SHRINKAGE

- Filling: visible*
- Skimming/levelling: slightly visible*
- Smoothing: none

SANDING/SHAPING

- Cannot be shaped
- Easy to sand as soon as the filler is dry

**No shrinkage in lightweight fillers*

HOW DO FILLERS SET AND HARDEN?



POWDER

HYDRAULIC LIME

- Sets and hardens through chemical reactions with water and doesn't require exposure to air. Sets in 2 phases, first quickly by crystallisation, then more slowly by carbonation.

CEMENT BASED FILLERS

- Hardens by crystallisation through a complex process started by the addition of water to the different components (e.g. silicates, aluminate...).

Example: Masonry Repair Filler, Anti-Damp Render

PLASTER BASED FILLERS

- Plaster is calcium sulphate hemihydrate, a product of the industrial processing of gypsum. When water is added to it, a so-called hydration reaction occurs which causes it to harden and it reverts to gypsum.

Example: Interior Filler, Joint, Skim & Fill

LIME BASED FILLERS

- NON-HYDRAULIC LIME: Slow setting when exposed to air by carbonation (CO₂).

READY MIX

PHYSICAL SETTING

- Ready mixed fillers are made with emulsion binders (e.g. vinyl, acrylic, etc.) which lose water content by evaporation as they dry. The water loss causes the molecules to fuse, creating a continuous layer of filler.

Example: Fill-Flex, Skim-Flex, Airless Plaster

CHEMICAL SETTING

- There are components in several ready mixed fillers that also undergo a chemical setting process. For example, some fillers contain drying oils that change chemically to harden when exposed to oxygen. Others contain a resin (e.g. PU) mixed with a suitable hardener which will trigger the set.

Example: Glazing Putty

LIGHTWEIGHT FILLER

- The water lost in traditional ready mixed fillers creates a vacuum, which means a very small amount of shrinkage can sometimes occur. However, lightweight fillers behave differently due to their special formulation. This means they dry much faster and they do not shrink.



FIND THE BEST PRODUCT FOR YOUR JOB, EASILY

INTERIOR SURFACES

Fillers for decoration
& repairs on interior
substrates



EXTERIOR SURFACES

Fillers for exterior substrates:
filling, repairing, formwork,
skimming



PROBLEM SURFACES

Versatile solutions for
problem substrates:
can be applied on
interiors & exteriors



WOOD SURFACES

For use on wood,
inside & out



PLASTERBOARD FINISHING SOLUTIONS

Fillers and accessories for jointing, finishing & repairs



SPRAY PLASTER

Machine applied fillers for backing, skimming,
finishing and plasterboard jointing





**CHOOSE A QUALITY LEVEL
THAT WORKS FOR YOU**

**FILLING SOLUTIONS
DESIGNED TO DO
A BETTER JOB AND
GIVE BETTER RESULTS.**

CORE



PREMIUM



OUR INTERIOR FILLER SOLUTIONS

FOR DECORATION AND REPAIRS
ON INTERIOR SUBSTRATES

- ✓ GAPS
- ✓ CRACKS
- ✓ HOLES



BEFORE

AFTER



INTERIOR



MANUAL

HOW TO REPAIR A GAP, CRACK OR HOLE



1 - PREPARE

by removing any loose pieces or particles and dusting off. If filling fine cracks and gaps, open them up by scraping them out with a shave hook or scraper.



2 - FILL

by applying plenty of filler to the cavity using a filling knife. Fill gradually and apply from several directions to make sure you don't leave any air pockets.



3 - SMOOTH

by passing over in different directions, starting from the centre of the filled area each time. Sand when the filler is dry and ready to paint.



QUICK DRY FILLER

POWDER

TX 110®

Quick repairs on walls & ceilings



- Will not shrink or slump
- Excellent adhesion & easy to sand
- No need to spot prime
- Will not flash or grin



WHICH SUBSTRATES?

NEW OR RENOVATED, UNPAINTED OR PAINTED

Gypsum plaster, lime plaster, plasterboards/drywall lining, old painted surfaces, cement, concrete, cellular concrete, breeze blocks, bricks, stone and primed wood.

Consumption	1kg of powder fills 1L when mixed
Mixing	1kg + 0.45L water (45%)
Second coat	Once the filler is dry
Cover with	Any type of filler, paint or wall coating. Do not coat directly with polyurethane paints nor epoxy solvent based paints
Pack sizes	Boxes: 1kg, 2kg - Bag in bag: 5x1kg, 10x1kg



INTERIOR FILLER

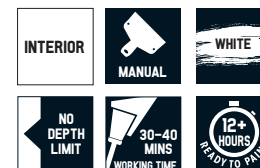
POWDER

LE REBOUCHEUR

Repairs on walls & ceilings



- Will not shrink or slump
- Easy to sand
- No need to spot prime
- Will not flash or grin



WHICH SUBSTRATES?

NEW OR RENOVATED, UNPAINTED OR PAINTED

Gypsum plaster, lime plaster, plasterboards/drywall lining, old painted surfaces, cement, concrete, cellular concrete, breeze blocks, bricks and stone.

Consumption	1kg of powder fills 1.1L when mixed
Mixing	1kg + 0.50L water (50%)
Second coat	Once the filler is dry
Cover with	Any type of filler, paint or wall coating
Pack sizes	Boxes: 1kg, 2kg - Bag in bag: 5x1kg, 10x1kg



QUICK FILL

READY MIX

LIGHTWEIGHT & READY MIXED

One coat repairs on walls & ceilings



- Will not shrink or slump
- Easy to sand
- No need to spot prime
- Will not flash or grin



WHICH SUBSTRATES?

NEW OR RENOVATED, UNPAINTED OR PAINTED

Gypsum plaster, plasterboards/drywall lining, old painted surfaces, cement, concrete, cellular concrete, breeze blocks, bricks, stone, and primed wood.

Consumption	1L fills 1L
Mixing	Ready to use
Second coat	Once the filler is dry
Cover with	Any type of filler, paint or wall coating
Pack sizes	Tubs: 1L, 4L



READY TO USE FILLER

READY MIX

READY MIXED

Repairs on walls & ceilings



- Easy to apply
- Easy to sand
- No need to spot prime
- Will not flash or grin



WHICH SUBSTRATES?

NEW OR RENOVATED, UNPAINTED OR PAINTED

Gypsum plaster, plasterboards/drywall lining, old painted surfaces, cement, concrete, cellular concrete, breeze blocks, bricks, stone and primed wood.

Consumption	1kg fills 0.65L
Mixing	Ready to use
Second coat	Once the filler is dry
Cover with	Any type of filler, paint or wall coating
Pack sizes	Tube: 330g - Tubs: 1.5kg, 4kg



FINE SURFACE FILLER

READY MIX

EXTRA FINE

For fine smoothing
over small defects



- Adheres to paintwork
- Easy to sand
- No need to spot prime
- Will not flash or grin



WHICH SUBSTRATES?

NEW OR RENOVATED, UNPAINTED OR PAINTED

Gypsum plaster, plasterboards/drywall lining, old painted surfaces, any type of filler, cement and concrete.

Consumption	450-700g per m ²
Mixing	Ready to use
Second coat	Once the filler is dry
Cover with	Any type of filler, paint or wall coating
Pack sizes	Tube: 330g - Tubs: 1.5kg, 4kg

*Up to 2 mm locally



RENOVATION SKIMCOAT

READY MIX

DECORATORS SKIMCOAT

Ready to use filler for
levelling & finishing damaged
and textured surfaces



- Ideal for covering textured and rough surfaces
- Certified for plasterboard jointing
- No PVA required, no need to spot prime
- Easy to sand



WHICH SUBSTRATES?

NEW OR RENOVATED, UNPAINTED OR PAINTED

Gypsum plaster, plasterboards/drywall lining, old painted surfaces, cement, concrete, cellular concrete, old textured surfaces, breeze blocks, bricks and stone.

Consumption	1.7kg/m ² /mm
Mixing	Ready to use
Second coat	Once the filler is dry
Cover with	Any type of filler, paint or wall coating
Pack sizes	Bucket: 10kg



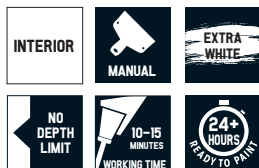
PLASTER OF PARIS

POWDER

Shaping & moulding



- Easy to shape & mould
- Quick setting
- Extra fine
- Easy to sand



WHICH SUBSTRATES?

NEW OR RENOVATED, UNPAINTED OR PAINTED

Gypsum plaster, gypsum tile, plasterboards/drywall lining, cement, concrete, breeze blocks, bricks and mortar.

Consumption	1kg fills 1L when mixed
Mixing	1kg + 0.75L water (75%)
Second coat	Once the filler is dry
Cover with	Any type of filler, paint or wall coating
Pack sizes	Bag: 4kg

MORE WALL FILL... ...LESS LANDFILL

i Did you know?

POWDER FILLER MEANS LESS PLASTIC PACKAGING

There's up to 80%* less plastic in powder filler packaging than in ready mixed tubs.



POWDER FILLER GOES FURTHER

100g of powder makes 130-150g** of filler once the water is added, so it fills 30-50% more holes than its ready mixed equivalent!



But we know there are times when only a ready mixed filler will do. And for those jobs we've made sure our **PLASTIC BUCKETS ARE MADE OF AT LEAST 30% RECYCLED MATERIALS** for a lower environmental impact.

* 1.5kg Ready To Use Filler tub made from 45g plastic. 1kg Interior Filler packaging made from 45g carton board and 9g plastic. ** Nearest equivalent product: Interior Filler/Ready To Use Filler = 49 % volume increase, Wood Repair Filler/Wood Filler = 31 % volume increase

BETTER FOR THE PLANET AND BETTER ON THE WALL

And when you choose a Toupret powder filler you'll be working with one of our most **versatile** and **high performing** solutions.

Toupret powder fillers:

- Can be filled to **any depth** without shrinking
- Won't **flash or grin** through paintwork, so there's no need to spot prime
- Can be **shaped** or moulded
- Are easy to sand and feather for a **quality smooth finish**



PLASTERBOARD FINISHING SOLUTIONS

- ✓ JOINTING
- ✓ FINISHING
- ✓ SKIMMING
- ✓ PATCHING
- ✓ REPAIRING

BEFORE

AFTER



INTERIOR



MANUAL

HOW TO TAPE JOINTS



1 - APPLY

filler generously to the recessed plasterboard edges.



2 - LOCATE

the joint tape on the filler.



3 - BED IN

by pressing the tape into the filler from top to bottom, to eliminate any trapped air.



4 - APPLY

a coat of filler over the tape straightaway (you don't need to wait for it to dry), taking care to feather out beyond the first coat. Then, once it's dry, cover with a second coat.

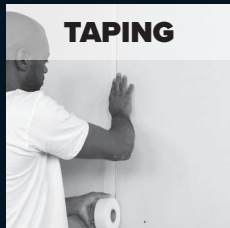
Toupret's comprehensive, expanded range provides the full plasterboard finishing system. For taping and jointing, surface finishing, and patch and repair work.

The high quality and reliability Toupret is famous for has been built into this range to guarantee an easier and faster job, while providing an excellent finish.

FILLING



TAPING



JOINTING



FINISHING



SANDING



SKIMMING



NEW FOR 2025

TAPING & JOINTING SYSTEM

Plasterboard finishing, start to finish, reliably covered with 7 new products.



DID YOU KNOW?

All Toupret finishing fillers can be applied with a roller for faster, easier application?

ROLLER



Providing for both established practices and innovative ways of working, Toupret's **Plasterboard Finishing Solutions** range offers a full system approach.



JOINT FILLER

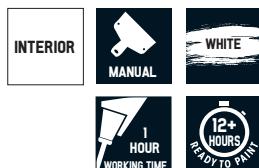
POWDER

1 HOUR

Filler for plasterboard jointing



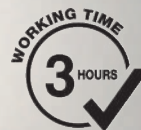
- 1 hour working time
- Adheres to painted surfaces
- Easy to sand
- Suitable for patching



WHICH SUBSTRATES?

NEW OR RENOVATED, UNPAINTED OR PAINTED
Gypsum plaster, plasterboard/drywall and old painted surfaces.

Consumption	1.1kg of powder/m ² /mm (250g/linear meter).
Mixing	1kg + 0.42L water (42%)
Second coat	2 hours
Cover with	Any type of filler, paint or wall coating
Pack sizes	Bag: 15kg



JOINT FILLER

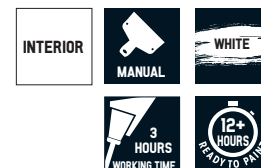
POWDER

3 HOUR

Filler for plasterboard jointing



- 3 hour working time
- Adheres to painted surfaces
- Easy to sand
- Suitable for patching



WHICH SUBSTRATES?

NEW OR RENOVATED, UNPAINTED OR PAINTED
Gypsum plaster, plasterboard/drywall and old painted surfaces.
There is no need to prime or seal the surface before application.

Consumption	1.1kg of powder/m ² /mm (250g/linear meter).
Mixing	1kg + 0.42L water (42%)
Second coat	5 hours
Cover with	Any type of filler, paint or wall coating
Pack sizes	Bags: 15kg, 25kg



FINISH FILLER

READY MIX

READY TO USE

Filler for surface finishing



- Easy to sand
- Excellent finish
- No need to spot prime
- Smooth application



WHICH SUBSTRATES?

NEW OR RENOVATED, UNPAINTED OR PAINTED

Gypsum, old painted surfaces, cement, concrete, cellular concrete and any type of butted or tapered plasterboard.

Consumption	1.7 kg/m ² /mm
Mixing	Ready to use
Second coat	Once the filler is dry
Cover with	Any type of filler, paint or wall coating
Pack sizes	Bucket: 20 kg



JOINT TAPE

PAPER TAPE

Paper tape for plasterboard jointing



- Micro perforations for better grip
- Resists bending
- 150m x 50mm



WHICH SUBSTRATES?

NEW OR RENOVATED, UNPAINTED OR PAINTED

Can be applied to any tapered or butted plasterboard

Cover with	Joint Filler
Pack sizes	Roll: 150m x 50mm



METAL CORNER TAPE

METAL TAPE

**Reinforced metal corner
tape for plasterboard jointing**

UK
CA CE

- Central groove for ease of folding
- Resists bending
- Reinforced with metal strips
- 30m x 51mm



 **WHICH SUBSTRATES?**
NEW OR RENOVATED, UNPAINTED OR PAINTED
Can be applied to any tapered or butted plasterboard

Cover with Joint Filler
Pack sizes Box: contains one 30m x 51mm roll



ADHESIVE SCRIM

SCRIM

**Self-adhesive mesh tape
for plasterboard jointing**

- Super strong
- Reliable adhesion even in cold temperatures
- 5°C - 35°C
- 90m x 48mm



 **WHICH SUBSTRATES?**
NEW OR RENOVATED, UNPAINTED OR PAINTED
Can be applied to any tapered or butted plasterboard

Cover with Joint Filler
Pack sizes Roll : 90m x 48mm

MULTIPURPOSE SOLUTIONS

JOINT, SKIM & FILL

JOINT, SKIM & FILL

JOINT & SKIM:
READY TO USE



PATCH & REPAIR

PATCH & REPAIR FILLER:
QUICK DRY

PATCH & REPAIR FILLER:
READY TO USE



THE TEAM LOVE IT

TRADE PROFESSIONAL
Instagram 2022
Refers to Plasterboard Finishing range

MY GO TO FOR EVERY JOB

TRADE PROFESSIONAL
Instagram 2022
Refers to Plasterboard Finishing range



JOINT & SKIM

READY MIX

READY TO USE

Filler for surface finishing
& plasterboard jointing



- Easy to sand
- Smooth application
- No need to spot prime
- For manual or spray application



WHICH SUBSTRATES?

NEW OR RENOVATED, UNPAINTED OR PAINTED

Gypsum, plasterboard, old painted surfaces, cement, concrete, cellular concrete and primed wood.

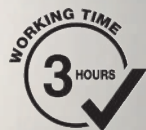
Consumption 17kg/m²/mm

Mixing Ready to use

Second coat Once the filler is dry

Cover with Any type of filler, paint or wall coating

Pack sizes Buckets: 10kg, 20kg



JOINT, SKIM & FILL

POWDER

QUICK DRY

Filler for surface finishing,
filling & plasterboard jointing



- One coat*
- Easy to sand
- No shrinkage, no depth limit
- No need to spot prime



WHICH SUBSTRATES?

NEW OR RENOVATED, UNPAINTED OR PAINTED

Gypsum, plasterboard, old painted surfaces, cement, concrete, cellular concrete and primed wood.

Consumption	1.1kg/m ² /mm
Mixing	Filling : 1kg + 0.38L water (38%) Skimming : 1kg + 0.45L water (45%)
Second coat	Once the filler is dry
Cover with	Any type of filler, paint or wall coating
Pack sizes	Bags: 5kg, 10kg

**Difficult applications may need more than one coat.*



JOINT, SKIM & FILL

POWDER

Filler for surface finishing,
filling & plasterboard jointing



- One coat*
- Easy to sand
- No shrinkage, no depth limit
- No need to spot prime



WHICH SUBSTRATES?

NEW OR RENOVATED, UNPAINTED OR PAINTED

Gypsum, plasterboard, old painted surfaces, cement, concrete, cellular concrete and primed wood.

Consumption	1.1kg/m ² /mm
Mixing	Filling : 1kg + 0.38L water (38%) Skimming : 1kg + 0.42L water (42%)
Second coat	Once the filler is dry
Cover with	Any type of filler, paint or wall coating
Pack sizes	Bags: 5kg, 10kg

**Difficult applications may need more than one coat.*



PATCH & REPAIR FILLER

POWDER

QUICK DRY

For gaps, cracks, scratches & holes



- One coat
- Easy to sand
- No shrinkage, no depth limit
- No need to spot prime



WHICH SUBSTRATES?

NEW OR RENOVATED, UNPAINTED OR PAINTED

Gypsum, plasterboard, old painted surfaces, cement, concrete, cellular concrete and primed wood.

Consumption	1kg of powder fills 1L
Mixing	1kg + 0.45L water (45%)
Second coat	Once the filler is dry
Cover with	Any type of filler, paint or wall coating
Pack sizes	Boxes: 1kg, 2kg - Bag: 5kg



PATCH & REPAIR FILLER

READY MIX

READY TO USE

For gaps, cracks, scratches & holes



- Easy to sand
- Excellent adhesion
- No need to spot prime
- Does not flash or grin



WHICH SUBSTRATES?

NEW OR RENOVATED, UNPAINTED OR PAINTED

Gypsum, plasterboard, old painted surfaces, cement, concrete, cellular concrete and primed wood.

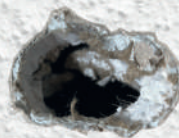
Consumption	1kg fills 0.65L when mixed
Mixing	Ready to use
Second coat	Once the filler is dry
Cover with	Any type of filler, paint or wall coating.
Pack sizes	Tub: 1.5kg

CHOOSING THE RIGHT EXTERIOR FILLER

FOR YOUR JOB

FILL
REPAIR
SHAPE
SKIM

- ✓ GAPS
- ✓ CRACKS
- ✓ DAMAGED MASONRY



BEFORE

AFTER



EXTERIOR



MANUAL

HOW TO REPAIR A BROKEN EDGE



1 - REMOVE

loose parts and dust away debris.



2 - RECONSTRUCT

the rough shape using a filling knife.



3 - WAIT

as the filler begins to harden and sculpt it with your blade.



4 - SMOOTH

the surface with a damp sponge.



MASONRY REPAIR FILLER

POWDER

TOUPRELITH® F

Can be applied to damp masonry

- Weather resistant
- Shapeable - repair without formwork
- No need to seal the substrate*



WHICH SUBSTRATES? DAMP OR DRY

Cement, concrete, breeze blocks, lime render, bricks and stone.

Consumption	1kg of powder fills 0.85L
Mixing	1kg + 0.35L water (35%)
Second coat	Once the filler is dry
Cover with	Any type of filler, paint or wall coating. Do not coat directly with polyurethane paints nor epoxy solvent based paints
Pack sizes	Box: 1.5kg — Bags: 5kg, 15kg

* Ensure the base substrate is hard, cohesive, clean and sound.



TOUGH MULTI-FILLER

POWDER

FIBAREX®

Filling, repairing & localised skimming



- Reinforced with fibres for extra strength
- Tough, with excellent adhesion
- Easy to sand
- No need to seal the substrate*



WHICH SUBSTRATES? NEW OR RENOVATED, UNPAINTED OR PAINTED

Plaster and lime mortar, cement, concrete, old painted surfaces (except flexible covering), breeze blocks, bricks, stone, glass and glazed tiles.

Consumption	1kg/m ² /mm
Mixing	1kg + 0.40L water (40%)
Second coat	Once the filler is dry
Cover with	Any type of filler, paint or wall coating. Do not coat directly with polyurethane paints nor epoxy solvent based paints
Pack sizes	Box: 2kg — Bags: 5kg, 10kg

* Ensure the base substrate is hard, cohesive, clean, sound and dry.



ROCK SOLID REPAIR FILLER

POWDER

MUR EX®

**Extreme durability & adhesion
on any substrate**

- Rich in resin
- Fills & repairs all substrates
- Shapeable - repair without formwork
- No need to seal the substrate*



WHICH SUBSTRATES?

NEW OR RENOVATED, PAINTED OR UNPAINTED

Gypsum plaster, old painted surfaces, cement, concrete, breeze blocks, bricks, stone, glass and glazed tiles.

Consumption	1kg of powder fills 1L
Mixing	1kg + 0.45L water (45%)
Second coat	Once the filler is dry
Cover with	Any type of filler, paint or wall coating. Do not coat directly with polyurethane paints nor epoxy solvent based paints
Pack sizes	Box: 2kg — Bag in bag: 5x1kg, 10x1kg

* Ensure the base substrate is hard, cohesive, clean, sound and dry.



QUICK FILL

READY MIX

TOUPRELEX®

One coat exterior repairs

- Lightweight & ready to use
- Will not shrink or slump
- Rich in resin
- No need to seal the substrate*



WHICH SUBSTRATES?

NEW OR RENOVATED, UNPAINTED OR PAINTED

Gypsum plaster, cement, concrete, cellular concret, breeze blocks, bricks, stone and old painted surfaces.

Consumption	1L fills 1L
Mixing	Ready to use
Second coat	Once the filler is dry
Cover with	Any type of filler, paint or wall coating. Do not coat directly with polyurethane paints nor epoxy solvent based paints
Pack sizes	Tubs: 1L, 4L

* Ensure the base substrate is hard, cohesive, clean, sound and dry.

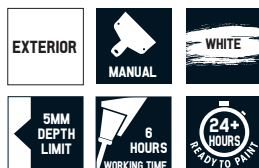


SKIMCOAT FILLER

POWDER

For smoothing damaged & rough masonry & render

- Extra smooth
- Easy to spread
- Long working time
- Allows the substrate to breathe
- No need to seal the substrate*



WHICH SUBSTRATES? NEW OR RENOVATED, UNPAINTED OR PAINTED

Concrete, cellular concrete, shuttered concrete, cement, mortars, renders, any type of filler, breeze blocks, bricks, stone, plaster.

Consumption	1.2kg/m ² /mm
Mixing	1kg + 0.30L water (30%)
Second coat	Once the filler is dry
Cover with	Any type of filler, paint or wall coating. Do not coat directly with polyurethane paints nor epoxy solvent based paints.
Pack sizes	Bags: 5kg, 15kg

* Ensure the base substrate is hard, cohesive, clean, sound and dry.



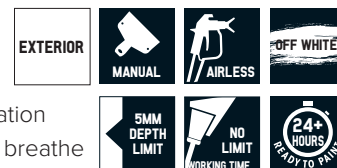
READY TO USE SKIMCOAT FILLER

READY MIX

READY MIXED

For smoothing damaged & rough masonry & render

- Easy to spread
- Flexible – resists cracking
- Manual or spray application
- Allows the substrate to breathe
- No need to seal the substrate*



WHICH SUBSTRATES? NEW OR RENOVATED, UNPAINTED OR PAINTED

Concrete, cellular concrete, shuttered concrete, any type of filler, cement mortars and renders, breeze blocks, bricks, stone, glass and glazed tiles.

Consumption	1.37kg/m ² /mm
Mixing	Ready to use
Second coat	Once the filler is dry
Cover with	Any type of filler, paint or wall coating. Do not coat directly with polyurethane paints nor epoxy solvent based paints.
Pack sizes	Tub: 10L

* Ensure the base substrate is hard, cohesive, clean, sound and dry.

VERSATILE SOLUTIONS FOR INTERIORS AND EXTERIORS

TREATING PROBLEM SURFACES

- ✓ DAMP SUBSTRATES
- ✓ CRACKS AND MOVEMENT
- ✓ POROUS SUBSTRATES

BEFORE

AFTER



INTERIOR
EXTERIOR



MANUAL

APPLICATION WITH A TROWEL (ANTI-DAMP RENDER)



1 - PREPARE

the filler to the required consistency.



2 - FILL

any areas to be repaired, up to 1 cm thick per pass.



3 - SKIM

with a trowel, to a minimum thickness of 2mm to ensure its physical properties.

BRUSH APPLICATION (ANTI-DAMP RENDER)



1 - PREPARE

the filler to the required consistency.



2 - APPLY

with a wide brush in successive criss-cross layers, to a minimum thickness of 2mm to guarantee its physical properties.



FILL-FLEX

READY MIX

FIBACRYL®

Flexible filler for gaps & cracks



- Adheres to plaster, masonry, primed wood & paintwork
- Highly flexible: will not crack
- Moves with the substrate
- No need to spot prime



WHICH SUBSTRATES?

NEW OR RENOVATED, UNPAINTED OR PAINTED

Gypsum plaster, plaster tiles, plasterboards, mortars, old painted surfaces, concrete, cellular concrete, cement, breeze blocks, bricks, stone and primed wood.

Consumption	1kg fills 0.7L
Mixing	Ready to use
Second coat	Once the filler is dry
Cover with	Any type of filler, paint or wall coating
Pack sizes	Cartridge: 310ml — Tub: 1kg



SKIM-FLEX

READY MIX

TX 140®

Flexible skimcoat for moving & tiled substrates

- Exceptional adhesion, even on tiles
- Ideal for kitchens and bathrooms
- Easy to spread and sand
- Remains flexible when dry



WHICH SUBSTRATES?

UNPAINTED OR PAINTED

Tiles, ceramics, glass, polystyrene, cork, gypsum plaster, plasterboards/drywall lining, old painted surfaces, all conventional surface preparation fillers, cement, concrete, cellular concrete, breeze blocks, bricks and stone.

Consumption	1.6kg/m ² /mm
Mixing	Ready to use
Second coat	Once the filler is dry
Cover with	All types of indoor and outdoor paint (except mineral paint) and wall coverings (check with us)
Pack sizes	Tub: 5kg



ANTI-DAMP RENDER

POWDER

HUMI-BLOCK

Breathable barrier for damp, porous & untreated masonry



- Ideal for basements & garages
- Exteriors: blocks water penetration
- Interiors: acts as a water barrier, while letting substrates breathe
- No need to seal the substrate**

WHICH SUBSTRATES? RAW MASONRY, DRY OR DAMP

Cement, concrete, breeze blocks, bricks and stones.

****Substrates to be treated must be stripped down to the masonry before application.**

Consumption	1.5kg/m ² /mm
Mixing	1kg + 0.22L water (22%)
Second coat	Once the filler is dry
Cover with	Any type of water-based coating (moisture vapour permeable) minimum V2 classified as per NF EN 1062-1 or preparation fillers, paint or wall coating
Pack sizes	Bag: 6kg

* Filling



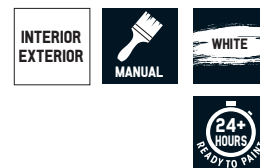
ANTI-DAMP TREATMENT

READY MIXED

HUMISTOP

Moisture barrier

- Blocks localised problem moisture
- Covers micro-cracks
- Apply with brush or roller



WHICH SUBSTRATES? DAMP SUBSTRATES

Old painted substrates, cement, bricks and stone.

Consumption	3m ² /kg for 2 coats
Mixing	Ready to use
Second coat	8 hours average time (application: in two cross coats)
Cover with	Any type of paint or coating
Pack sizes	Tin: 1kg



WALL HARDENER

SOLUTION

Improves the adhesion of fillers & coatings



- Stabilising hardener
- Hardens loose or powdery substrates
- Fast penetrating



WHICH SUBSTRATES? ABSORBANT, POROUS AND DRY

Gypsum plaster, plasterboards/drywall lining, cement, concrete, mortars, bricks, stone, porous tiles, whitewash and renders.

Consumption	8m ² /L (depends on the porosity of the substrate)
Mixing	Ready to use
Second coat	Once the filler is dry
Cover with	Any type of paint and wall-paper. Any type of Toupret filler.
Pack sizes	Tin: 1L

*Colourless when dry



CRACK REPAIR

SCRIMS

FINE / ADHESIVE

For treating cracks

FINE, ELASTIC SCRIM FOR CRACK REPAIR

- Apply with paint
- Elasticity 70%
- Inert or moving cracks
- Very fine, low-profile weave: easy to cover

Roll: 20m x 5cm

STRONG, ADHESIVE SCRIM FOR CRACK REPAIR

- High tensile strength
- Inert or moving cracks
- Adhesive for easy application

Roll: 20m x 5cm

WHICH SUBSTRATES? TREATED, FILLED CRACKS

Cover with Any type of finish

REPAIR AND RESTORE

WOOD

- ✓ TREAT
- ✓ FILL
- ✓ REPAIR
- ✓ SHAPE
- ✓ FINE FINISH



BEFORE

AFTER



INTERIOR
EXTERIOR



MANUAL

**OUR SOLUTIONS
TO RENOVATE
ALL TYPES OF WOOD**



BEFORE

AFTER



WOOD REPAIR FILLER

POWDER

COLOUR: NATURAL WOOD

Easy to shape & quick drying
on interiors & exteriors



- Working time: 30 minutes
- Easy to sand
- Compatible with all paints & coatings
- Can be drilled & screwed
- Low odour



WHICH SUBSTRATES?

Any type of wood, including common exotic species, chipboard and plywood. For optimal results, apply WOOD HARDENER beforehand.

Consumption	1kg fills 1L when mixed
Mixing	1kg + 0.30L water (30%)
Second coat	Once the filler is hard and dry
Cover with	Any type of conventional paints, varnishes and stains
Pack sizes	Boxes: 1kg, 2kg



WOOD REPAIR FILLER

POWDER

COLOUR: WHITE

Easy to shape & quick drying
on interiors & exteriors



- Working time: 30 minutes
- Easy to sand
- Compatible with all paints & coatings
- Can be drilled & screwed
- Low odour



WHICH SUBSTRATES?

Any type of wood, including common exotic species, chipboard and plywood. For optimal results, apply WOOD HARDENER beforehand.

Consumption	1kg fills 1L when mixed
Mixing	1kg + 0.30L water (30%)
Second coat	Once the filler is hard and dry
Cover with	Any type of conventional paints, varnishes and stains
Pack sizes	Boxes: 1kg, 2kg



WOOD FILLER

COLOUR: NATURAL WOOD

**Ready to use on interiors
& exteriors**

READY MIX

- Easy to apply and sand
- Compatible with all paints & coatings
- Can be drilled & screwed
- Low odour



WHICH SUBSTRATES?

Any type of wood, including common exotic species, chipboard and plywood. For optimal results, apply WOOD HARDENER beforehand.

Consumption	1kg fills 0.65L
Mixing	Ready to use
Second coat	Once the filler is hard and dry
Cover with	Any type of conventional paints, varnishes and stains
Pack sizes	Tube: 330g – Tub: 1.25kg



WOOD FILLER

COLOUR: OFF-WHITE

**Ready to use on interiors
& exteriors**

READY MIX

- Easy to apply and sand
- Compatible with all paints & coatings
- Can be drilled & screwed
- Low odour



WHICH SUBSTRATES?

Any type of wood, including common exotic species, chipboard and plywood. For optimal results, apply WOOD HARDENER beforehand.

Consumption	1kg fills 0.65L
Mixing	Ready to use
Second coat	Once the filler is hard and dry
Cover with	Any type of conventional paints, varnishes and stains
Pack sizes	Tube: 330g – Tub: 1.25kg



FINE FINISH WOOD FILLER

READY MIX

Extra fine smoothing on
interiors & exteriors

- Covers small defects
- Flexible
- Quick drying
- Compatible with all paints & coatings

INTERIOR
EXTERIOR

MANUAL

WHITE

IMM
DEPTH
LIMIT

NO
LIMIT
WORKING TIME

1
HOUR
READY TO PAINT

WHICH SUBSTRATES?

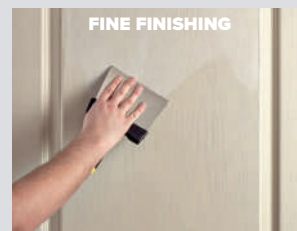
All primed interior and exterior wood surfaces. For optimal results, apply WOOD HARDENER beforehand.

Consumption	450g/m ²
Mixing	Ready to use
Second coat	Once the filler is hard and dry
Cover with	Any type of conventional paints, varnishes and stains
Pack sizes	Tube: 400g

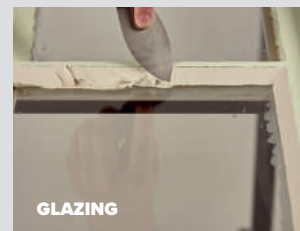
BRING WOOD BACK TO LIFE

THE COMPLETE SOLUTION TO REPAIRING AND RESTORING WOODEN SURFACES

FILLING & REPAIRING



TREATING & GLAZING





WOOD HARDENER

SOLUTION

Improves adhesion of fillers & coatings on interiors & exteriors



- Toughens rotten wood
- Adheres to damp wood
- Deep penetrating
- Water based



WHICH SUBSTRATES?

Any type of stripped or sanded wood: absorbent, dry or damp, including exotic species, chipboard and plywood.

Consumption	About 6 - 8m ² per L (depends on the type of wood).
Mixing	Ready to use
Second coat	Once the filler is hard and dry
Cover with	Any Toupret wood filler, conventional paints, varnishes and stains
Pack sizes	Tin: 1L

**Colourless when dry*



GLAZING PUTTY

PUTTY

Flexible - will not crack on interiors & exteriors



- Long-lasting
- Compatible with all paints & coatings
- Doesn't stick to your hands
- Will not smear glazing



WHICH SUBSTRATES?

Any type of wood, including common exotic species and all primed wood. The substrate must be previously primed. Do not use for double glazing fitting.

Consumption	6m per kg
Mixing	Ready to use
Second coat	Once a skin has formed
Cover with	Any paint, varnish or preservative coat.
Pack sizes	Tin: 1kg

AIRLESS SPRAY PLASTERING

FOR NEW BUILDS OR RENOVATIONS

HIGH QUALITY FINISH IN LESS TIME

- ✓ BLOW HOLES
- ✓ LEVELLING
- ✓ SMOOTHING
- ✓ FINISHING
- ✓ JOINTING



INTERIOR AIRLESS

AIRLESS: HIGH PRESSURE SPRAYING

Spray 'plastering' is the machine application of filler using a high pressure airless spray machine. The machine is equipped with a gun and offers even product distribution and a faster application and completion on construction sites, thanks to quick drying times.

User comfort is one of the great advantages of machine spraying: a lightweight gun and hose, less noise, more manageable and ideal for multi-storey sites. Can be used for: blow holes, levelling, smoothing, finishing and jointing.



AIRLESS SPRAY PLASTERING

BENEFITS

SAVE TIME

FASTER APPLICATION FOR IMPROVED PRODUCTIVITY.

FOR A 50m ² JOBSITE	TRADITIONAL MANUAL APPLICATION	MACHINE APPLICATION
PREPARATION	2 to 3 minutes	10 to 15 minutes
PROTECTION	15 minutes (floor protection)	60 minutes (covering ceiling, floor, windows and woodwork)
APPLICATION	8 hours (2 coats)	2 and a half hours (2 coats)

SAVE MONEY

LESS PRODUCT WASTE, LOWER WATER CONSUMPTION, LOWER LABOUR COSTS.

SAVE EFFORT

LESS EFFORT, LESS STRESS ON THE ARMS AND SHOULDERS. LESS MOVEMENT, THANKS TO THE EASY OPERATION OF THE TOOLS AND THE EVEN FILLER DISTRIBUTION.

1 AIRLESS SPRAY PLASTERING HOW TO APPLY

MACHINE SET UP

Remove the gun filters (strainer, suction and pencil) to enable the product flow. Load the spray plaster into your bucket or hopper and prime the airless machine in water.



NOZZLE SELECTION

We recommend suitable nozzles for each of our spray plasters. Please refer to the product packaging or the technical data sheet at www.toupret.co.uk for details.

APPLICATION

Stand at right angles to the wall at a distance of 0.7 to 1m. Apply at a constant 90° spraying angle, 1 square metre at a time, moving the gun parallel to the substrate at a constant speed to ensure an even coating of the product. Proceed in cross passes, overlapping the previous pass by 50% as you progress.



SKIMMING OR SMOOTHING

After spraying, skim with a blade or trowel at least 50cm long. If also spraying ceilings it is recommended to spray them first, before starting on the walls. Apply a second coat as necessary as soon as the first one is dry.

SANDING

Wait until completely dry, then sand as required.



2 CHOOSING THE RIGHT NOZZLE

Each spray machine has inherent power values. The type of filler and coating operation determine the nozzle choice. The flow of the nozzle must always be equal to or less than the flow of the pump. Example: for a machine flow of 4.8l/min, the maximum nozzle size should be 0.031 (with a 4.42L/min flow). The table below is a guide to which nozzles to use.

Nozzle outlet diameter (inches *)	0.017	0.019	0.021	0.023	0.025	0.027	0.029	0.031	0.035
NOZZLE NUMBER		1.19	1.21						
	2.17	2.19	2.21	2.23	2.25				
	3.17	3.19	3.21	3.23	3.25	3.27		3.31	3.35
	4.17	4.19	4.21	4.23	4.25	4.27	4.29	4.31	4.35
	5.17	5.19	5.21	5.23	5.25	5.27	5.29	5.31	5.35
	6.17	6.19	6.21	6.23	6.25	6.27	6.29	6.31	6.35
			7.21	7.23	7.25		7.29		7.35
	8.17	8.19	8.21					8.31	
	9.17								
Flow rate	1.17 L/min	1.47 L/min	1.79 L/min	2.15 L/min	2.54 L/min	2.54 L/min	3.42 L/min	4.42 L/min	4.42 L/min

*The first nozzle number before the decimal place represents the spray angle. It should be multiplied by 10 to calculate the spray angle. The two numbers to the right of the decimal place indicate the spray nozzle outlet diameter. So for a 5.35 nozzle, the spray angle is 50° and the nozzle outlet diameter is 0.35 inches (0.89mm).



AIRLESS PLASTER

READY MIX

SPRAY PLASTER

For levelling walls & ceilings



- One coat system
- Smooth glide
- Long working time
- Easy to sand



WHICH SUBSTRATES?

NEW OR RENOVATED, UNPAINTED OR PAINTED

Plaster, plasterboard, honeycombed concrete, cellular concrete, bricks, breeze blocks, rendered cement, old painted surfaces, fiberglass fabrics, all textured surfaces and lime mortars.

Consumption	17 kg/m ² /mm
Mixing	Ready to use
Second coat	Once the filler is dry
Cover with	Any type of filler, paint or wall coating
Nozzles	5.31 - 5.35 - 6.31 - 6.35
Pack sizes	Bag: 25kg



AIRLESS ALL-IN-ONE PLASTER

READY MIX

SPRAY PLASTER

For levelling with a fine finish



- One coat system
- High build
- Extra fine finish
- Smooth glide



WHICH SUBSTRATES?

NEW OR RENOVATED, UNPAINTED OR PAINTED

Plaster, plasterboard, honeycombed concrete, cellular concrete, bricks, breeze blocks, rendered cement, old painted surfaces, fiberglass fabrics, all textured surfaces and lime mortars.

Consumption	17 kg/m ² /mm
Mixing	Ready to use
Second coat	Once the filler is dry
Cover with	Any type of filler, paint or wall coating
Nozzles	5.31 - 5.35 - 6.31 - 6.35
Pack sizes	Bag: 25kg



AIRLESS JOINTING PLASTER

READY MIX

SPRAY PLASTER

For jointing & skimming



- Fine finish
- Smooth glide
- Easy to sand
- UKCA & CE certified for jointing



WHICH SUBSTRATES?

Tapered edge plasterboard, with or without insulation.

Consumption	1.7 kg/m ² /mm
Mixing	Ready to use
Second coat	Once the filler is dry
Cover with	Any type of filler, paint or wall coating
Nozzles	3.31 to 6.35
Pack sizes	Bag: 25kg

SPRAY WITHOUT COMPROMISE



Our range has been specifically designed to give professionals the best results for jointing, skimming, backing and finishing with an airless spray machine.

TIME SAVING

COST SAVING

LABOUR SAVING

Get the Toupret edge, with a range of spray plasters that guarantees the high quality and reliability Toupret is known for.

TOUPRET®
FILLERS FOR PROFESSIONALS

#GUIDING TRADE PROFESSIONALS EVERY DAY!

DEDICATED TECHNICAL ADVICE

For an immediate response to any urgent technical or commercial question, contact our expert customer support.

Dedicated to answering your questions on building works specifications, product features, standards, arranging site visits or meetings at your local merchant.

EXPERT FAIRS & DEMONSTRATIONS

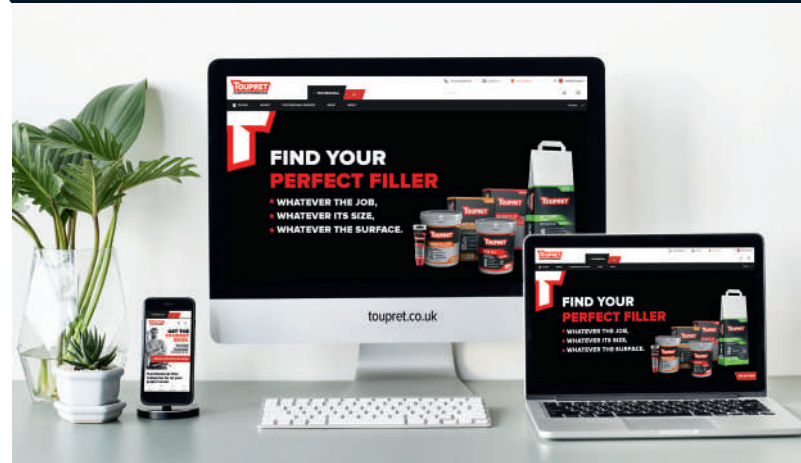
Toupret trade demonstration sessions usually take place at your decorators or builders merchant premises. Here you can see and try for yourself any Toupret product being featured that day. Attended by the Toupret technical and demonstration or sales teams, these occasions are a valuable mutual source of information.

Exchanging professional know-how, plus training and support for:

- Filling, jointing & skim filling
- Interior and exterior jobs
- Using specialist fillers for solving specific problem jobs
- Bringing wood back to life with filler

For information on future demonstration events, contact our office and we will direct you to one of our technical field team.

OUR WEBSITE



NEW CONTENT ONLINE - 24/7 SUPPORT

- Videos
- Product technical information
- Product advice
- FAQ's

FOLLOW US

[toupret.co.uk](https://www.toupret.co.uk)



This image shows a single sheet of white paper with horizontal ruling lines. The lines are evenly spaced and run across the width of the page. There are no margins, text, or other markings on the paper.This image shows a single sheet of white paper with horizontal ruling lines. The lines are evenly spaced and run across the width of the page. There are no margins, text, or other markings on the paper.

AT YOUR SERVICE



TRAINING & PROJECT SUPPORT

- For information on future demonstration events or for specific training or advice, contact our office and we will direct you to one of our technical field team.



TECHNICAL ASSISTANCE

- For urgent technical or commercial questions, contact our expert customer support: projects specifications, product features, standards, arranging visits or meetings at your local merchant: toupretuk@toupret.com or 0208 916 2134. Monday to Friday 9am to 5pm.



ONLINE SUPPORT 24/7

- Expert advice, detailed product information, selection advice, application videos: toupret.co.uk



DOWNLOAD THE TOUPRET APP

All the product information, news and advice you need, straight from your phone.



TOUPRET (UK) LIMITED

Capital Business Centre
Unit 19B, 22 Carlton Road
South Croydon CR2 0BS
Tel: +44 (0)208 916 2134
www.toupret.co.uk



TOUPRET®
FILLERS FOR PROFESSIONALS

FOLLOW US

toupret.co.uk